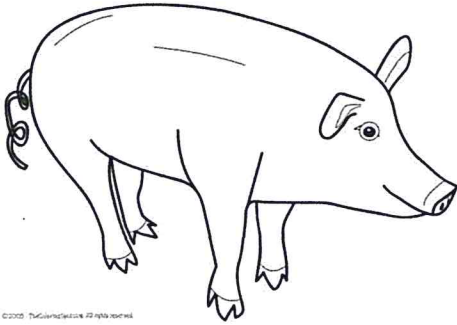


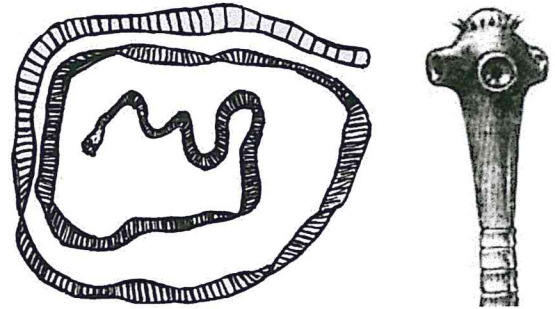
# Parasitism Examples

## PIG



Have lots of digested food in the intestine

## TAPEWORM



Need to eat food that is already digested

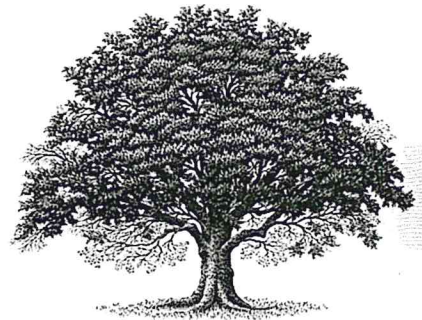


## MISTLETOE



Type of plant that sucks nutrients out of trees

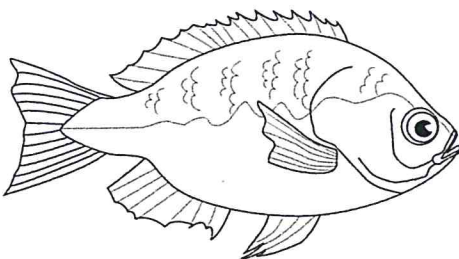
## OAK TREE



Big tree with lots of nutrients

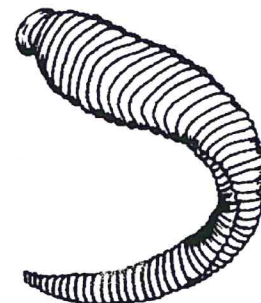


## FISH



Live in the water and have blood

## LEECH



Live in the water and suck blood from animals that live in water



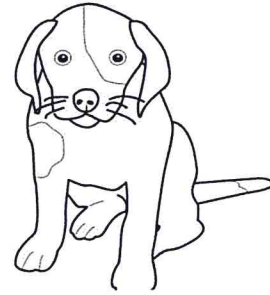
## Parasitism Examples

### TICK



Lives in the grass and needs to attach to an animal and eat blood

### DOG



Animal that runs through the grass and has blood

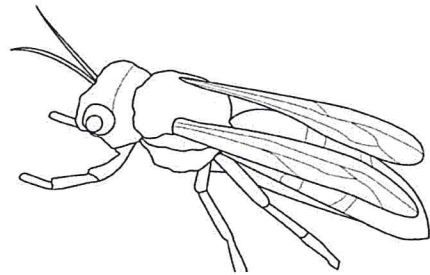


### CATERPILLAR



Eats leaves on trees and other plants

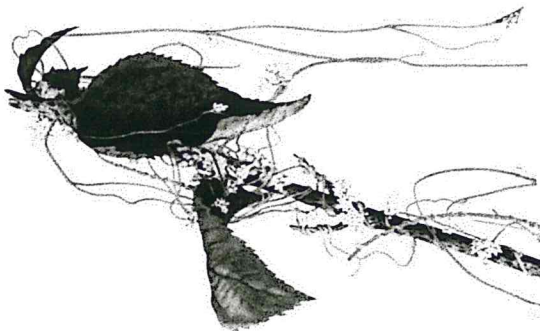
### EUCHARITID WASP



Lay eggs inside a caterpillar

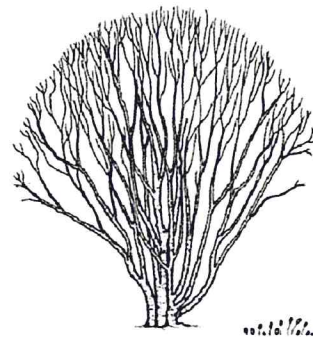


### DODDER



Vine that wraps around a plant and takes nutrients and water from it

### SHRUBS

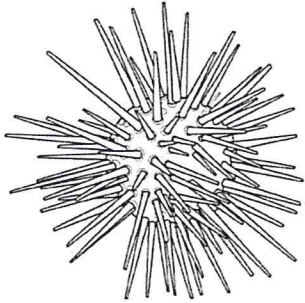


Get water and nutrients from the ground and nutrients from the sun



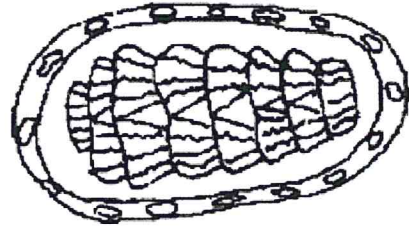
## Commensalism Examples

### PURPLE SEA URCHIN



Make burrows in the rock for protection

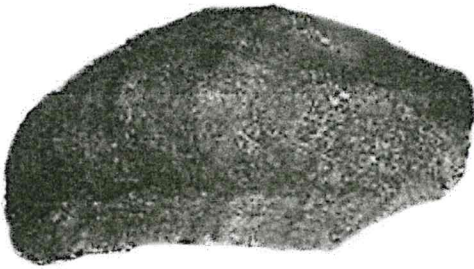
### LINED CHITON



Need a burrow for protection from predators and waves

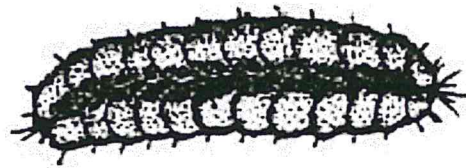


### GUMBOOT CHITON



Have large openings under their gills

### SCALE WORM



Need an ocean animal to live in for protection and water flow

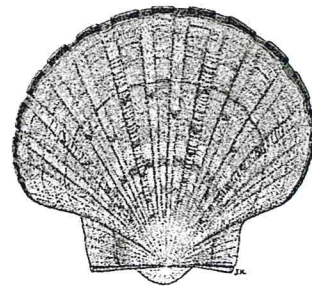


### BARNACLE



Needs a hard, flat, open surface to attach to and live on

### SCALLOP



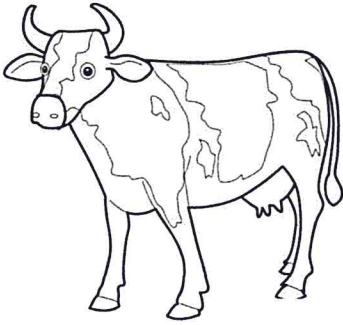
Makes a hard, flat shell





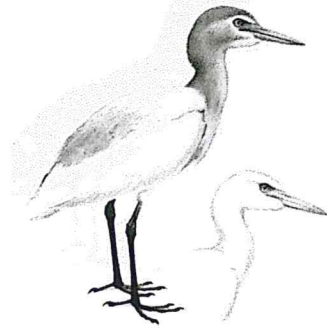
## Commensalism Examples

### **COWS**



Graze in a herd in open fields

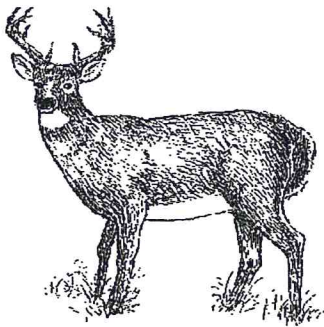
### **CATTLE EGRET**



Eat insects that get stirred up by large herds of animals

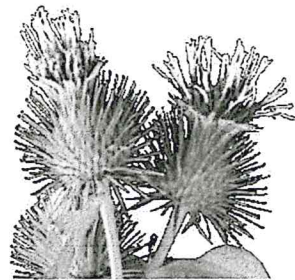


### **DEER**



Moves around a lot through forests and fields

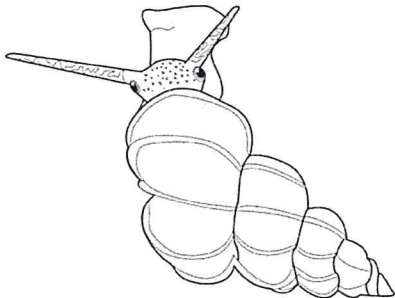
### **BURDOCK**



Has sticky burs that need to be carried around to make new burdock plants

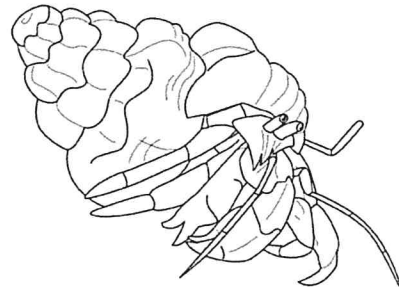


### **SEA SNAIL**



Makes hard, round shells to live in for protections

### **HERMIT CRAB**

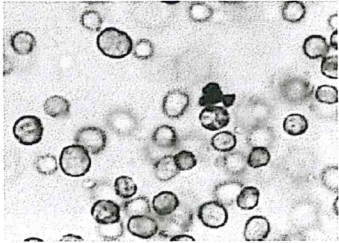


Uses shells made by other animals for protection



## Mutualism Examples

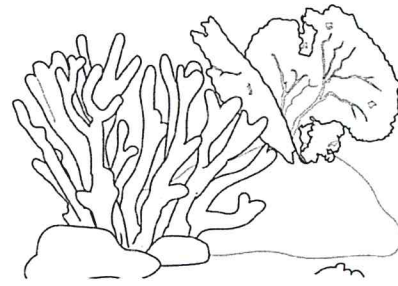
### ZOOXANTHELLAE (algae)



Produces extra nutrients

Needs a hard place to live for protection

### CORAL REEF

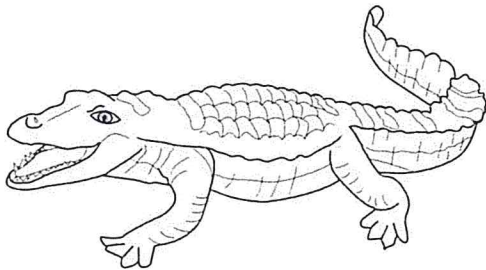


Provides a hard place to live

Needs nutrients to grow faster



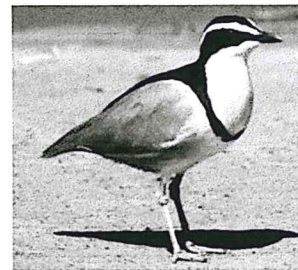
### NILE CROCODILE



Has leeches in its mouth

Needs to get rid of leeches in its mouth

### EGYPTIAN PLOVER

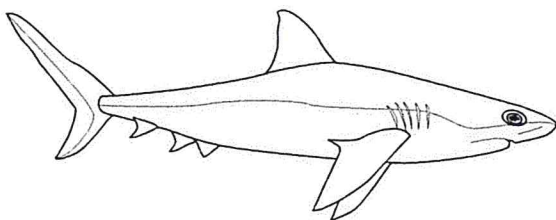


Eats leeches

Needs to find a reliable source for leeches to eat



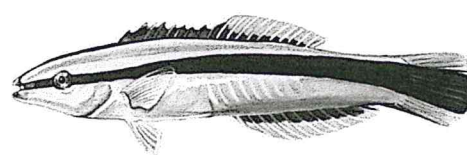
### SHARK



Has food scraps and parasites in its mouth

Needs to get rid of parasites

### CLEANER FISH



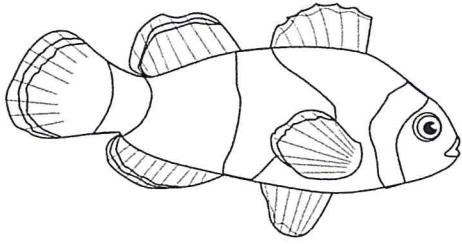
Eats food scraps and parasites

Needs to find food scraps and parasites to eat



# Mutualism Examples

## CLOWNFISH



Excretes nutritional waste and eats algae

Needs a place to hide and be protected



## SEA ANEMONE



Has stinging tentacles

Needs nutrients and protection from competition with algae

## SEA ANEMONE

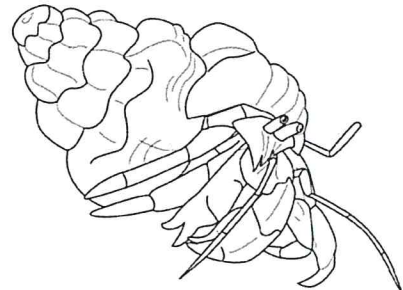


Has stinging tentacles

Needs water flow to feed



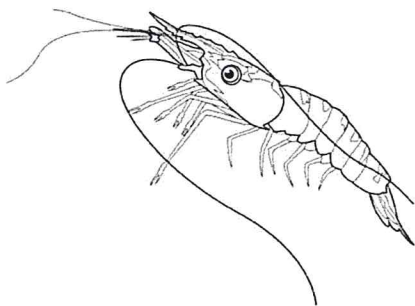
## HERMIT CRAB



Moves around a lot

Needs protection from predators

## SHRIMP

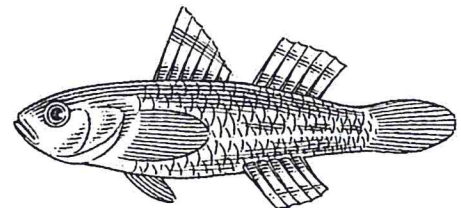


Good at watching for predators

Needs a burrow for protection



## GOBY FISH



Digs safe burrows for protection

Blind and cannot spot predators