

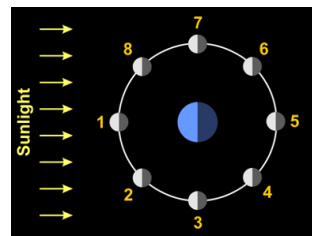
The arrows in a food web always point

At the one doing the eating

As you add height to an object you are also adding

Gravitational Potential Energy

At position Three



Where would you find a first quarter moon?

A biome that has trees that lose their leaves in the fall, home to animals such as deer, squirrels, rabbits, and variety of birds

A Deciduous forest

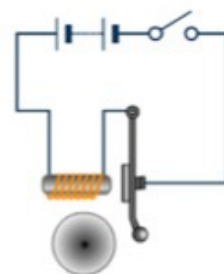
A biome that is located close to the equator, receives 3 to 5 meters of rainfall per year, home to numerous birds, vines, and has the same season all year

A rainforest

A biome that receives less than 10 inches of rainfall a year, with plants that have long taproots or shallow root systems

A Desert

Chemical to electrical to mechanical to sound



What are the energy transformations when the switch is closed and a bell is activated

A chunk of frozen gas, and rock that orbits the sun; as it nears the sun, it produces a gas tail that points away from the sun

Comet

The direct cause of air movement between high and low pressures

Solar energy/The Sun

An example of a consumer which is an organism that eats either plants or animals or both

deer eating berries, vulture eating a dead animal, or a mushroom growing on a dead log

Hot water/air \_\_\_\_\_  
and cold water/air  
\_\_\_\_\_

Rises and sinks

A huge ball of gas that is  
extremely hot and  
produces its own energy

Star or Sun

If the air pressure is  
falling you can predict  
that the weather will be

Getting cloudy first then  
eventually rain and  
possible storms

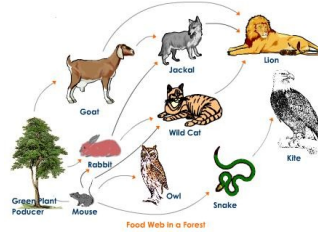
If the air pressure is  
rising you can predict  
that the weather will be

Fair and sunny

In scientific investigation  
you must have a \_\_\_\_\_  
in order to compare to

control or control group

The Lion



Which consumer obtains energy from 3 organisms?

The lunar cycle occurs approximately every \_\_\_\_\_ days

28 days

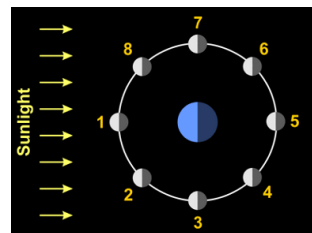
Materials that will conduct electricity are called

Conductors (like copper & aluminum)

A natural satellite that orbits a planet

Moon

Neap Tides



When the moon is in position 3 or 7 what type of tide will occur (Makes a right angle)

A negative unintended consequence of using pesticides on crops would be

changes to the flow of energy in a food web

One year is the length of time it takes

the Earth to revolve around the sun once

The original source of energy that heats the atmosphere and creates air movement

The Sun

The part of the experiment that does not change

Control or control group

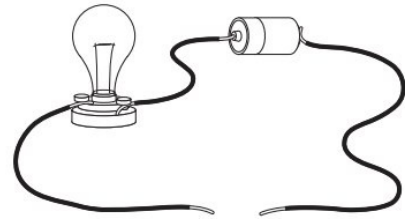
The results of my change in an experiment

Dependent Variable

A rocky body that is smaller than a planet, orbits the sun between Mars and Jupiter

Asteroid

Something made of metal, like a pair of metal scissors



What could be placed to in this circuit to complete the circuit and the light to come on

The type of weather you get when the mercury in a barometer is 759 millimeters or 29.88 in/hg and falling rapidly?

Severe Storms

The type of weather you get when the mercury in a barometer is steady at 768 millimeters or 30.24 in/hg?

Fair and sunny

The type of weather you get when the mercury is a barometer is 765 millimeters or 30.11 in/hg and falling?

Rain

What I change in an experiment to see if it makes a difference

Independent Variable

When burning wood and leaves the energy transformations would be

Chemical energy in the wood transferred into heat energy

When observing a plane high in the sky, how will it appear if it descends (lowers) closer to you?

It will appear bigger and more plane details will be seen

When testing a prototype to see if it works you will need to see

if the end result will give the desired result you were looking for

Which of these is an abiotic element: birds, deer, trees, and snow

snow